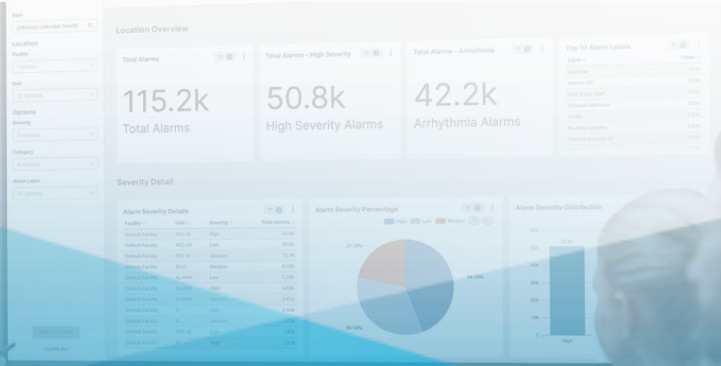


AIRSTRIP®



AirStrip® Alarm Analytics™

Alarm analytics to analyze alarm volumes and identify trends

AirStrip's Alarm Analytics gives hospital leadership the alarm data they need to decrease alarm fatigue and improve response times. Users can view and analyze alarm data by date range, unit, severity, category, and alarm label. The alarm data is pulled from primary source systems, integrated using the AirStrip medical device library, and served up in an easy-to-use reporting tool.

ALARM DURATION

The Alarm Duration Dashboard shows alarm duration data by severity, category, and units. Users can view average duration with trends and can filter the data by various criteria.

INDIVIDUAL ALARM DETAIL

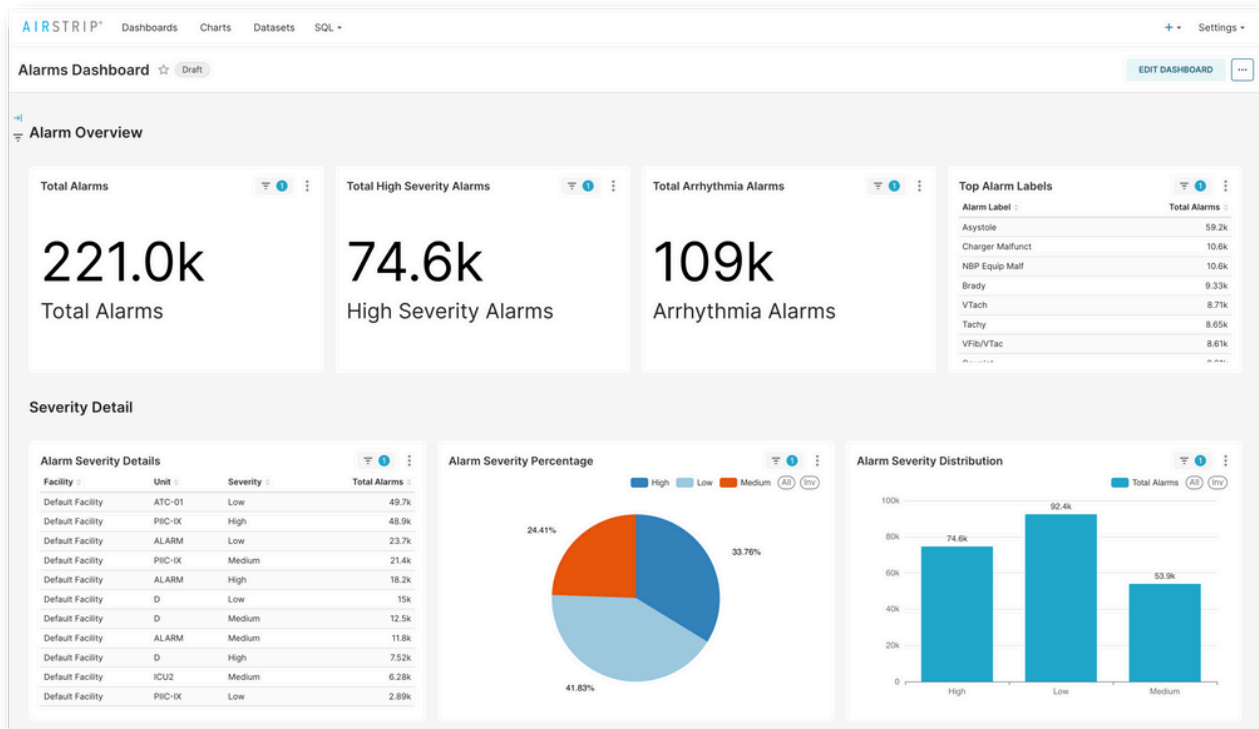
The Individual Alarm Detail Dashboard tracks data related to a single alarm type. The data displayed includes total alarms, average alarm value, highest alarm day, alarm histogram, and alarm total - daily trend.

ALARMS DASHBOARD

The Alarms Dashboard provides a comprehensive overview of alarm events for selected locations. Clinical leaders can analyze alarms by label, severity, and category and target interventions to reduce alarm fatigue.

AirStrip Alarm Analytics unlocks alarm data and displays it in easy-to-read dashboards, allowing leadership to analyze trends and implement solutions to better manage alarm fatigue.

ALARM DASHBOARD



CARE AREA SUMMARY

The Care Area Summary Dashboard enables users to understand the cumulative alarm data within a specific care area to quantify alarm burden and to identify areas experiencing alarm fatigue. The data helps clinical leaders better understand the frequency and burden of non-actionable alarms and implement interventions that prioritize clinically relevant alarms.

QUALITY INITIATIVE ASSESSMENT

The Quality Initiative Assessment Dashboard provides a 30-day overview of alarm data, which can be filtered by date range. This dashboard summarizes the alarm burden for the given period, providing a statistical summary of alarm volumes per day by category and severity to help identify alarms contributing to alarm burden.

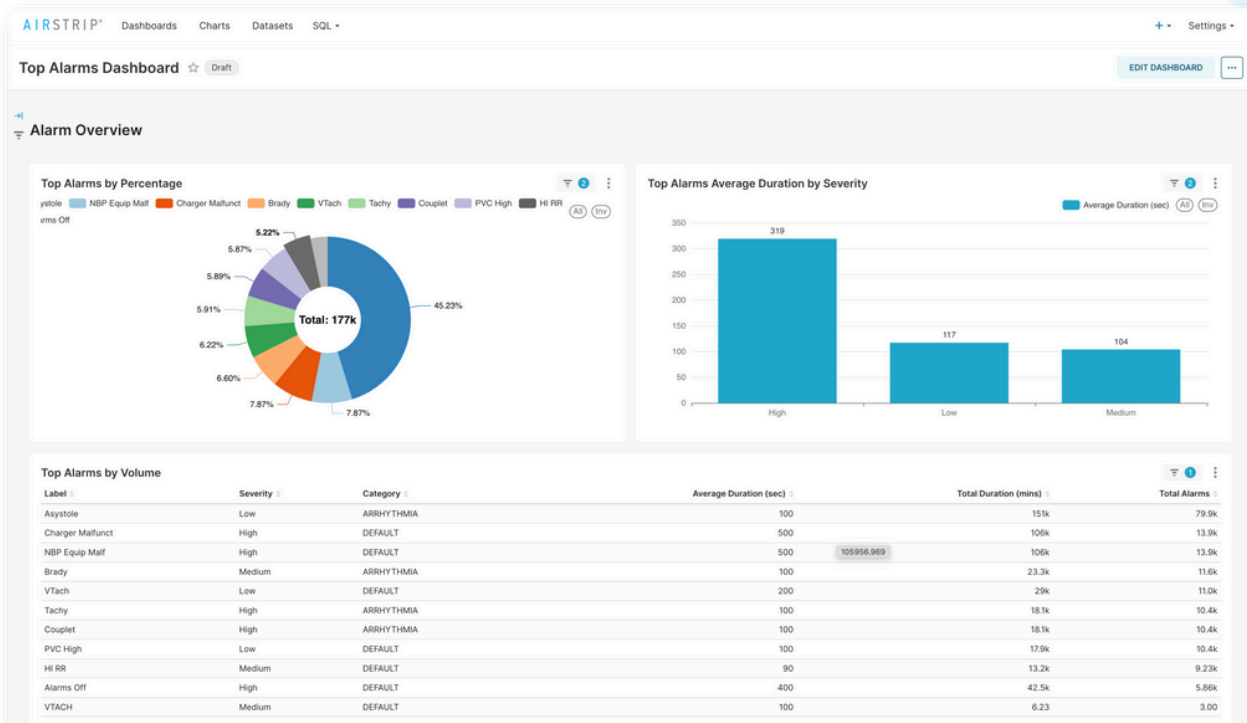
ALARM BURDEN COMPARISON

The Alarm Burden Comparison Dashboard displays total alarms by day, top alarms, total alarms by unit, daily trends, and unit distribution by category and severity. Clinical leaders can utilize this dashboard to compare and understand alarm burden across locations.

ALARMS BY DATE

The Alarms by Date Dashboard provides a clear visual of daily alarm event totals. This report helps pinpoint patterns, such as alarm increases on weekends or days with limited alarm activity.

TOP ALARMS DASHBOARD



TOP ALARMS DASHBOARD

The Top Alarms Dashboard showcases the top alarms by cumulative totals. Clinical Leaders can utilize this dashboard to identify the most common alarm labels that attribute to noise levels impacting staff and patient experience in specific care areas and/or within the entire facility.

ALARM VOLUME BY BED

The Alarm Volume by Bed Dashboard summarizes alarm frequencies by type, severity, and category for each physiological monitor. Clinical leaders can utilize this dashboard to understand within a unit what beds are responsible for noise levels and/or alarm fatigue.

AirStrip® provides clinical surveillance applications and alarm communication management technology that unlocks siloed data and transforms it into contextually rich, actionable information to surface life-saving decisions that need to be made quickly.

Learn how AirStrip can help your clinicians diagnose earlier than ever before, accelerate life-saving interventions, reduce the cost of care, and save lives.
Visit www.airstrip.com to learn more.